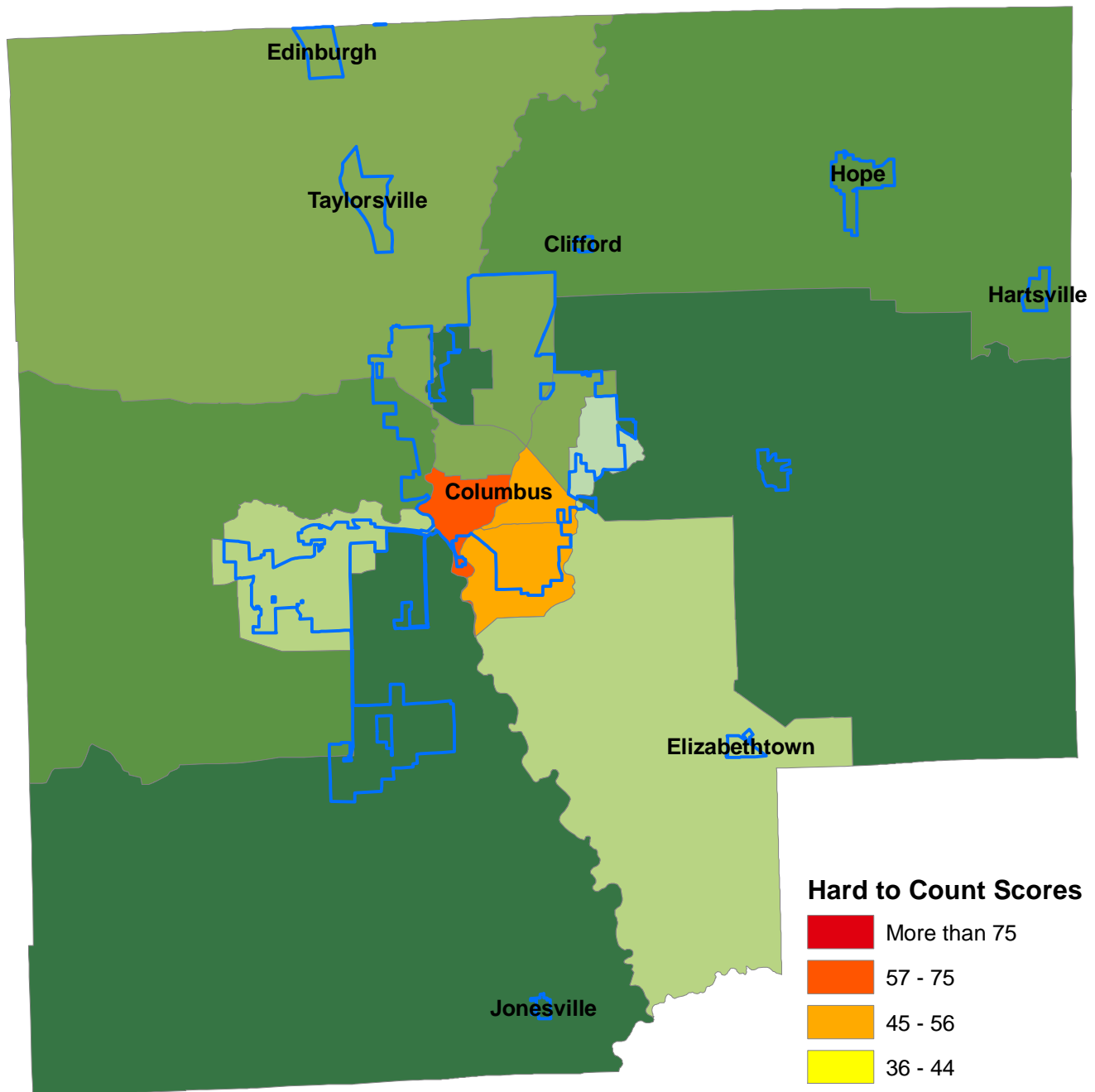


Hard to Count Tracts in Bartholomew County

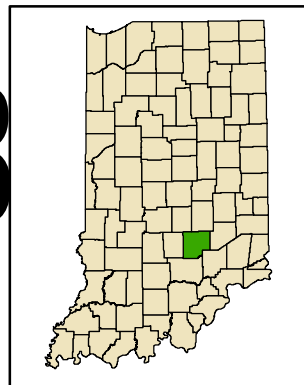


Note: High scores indicate high concentrations of attributes that make enumeration difficult, which increase the likelihood of an undercount.

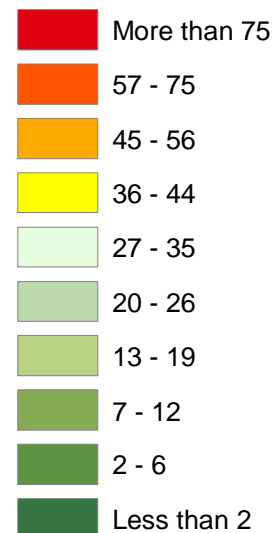
Source: Indiana Business Research Center, using the Census 2010 Planning Database with Census 2000 data.

Produced May 2008

3



Hard to Count Scores



0 1 2 4 Miles